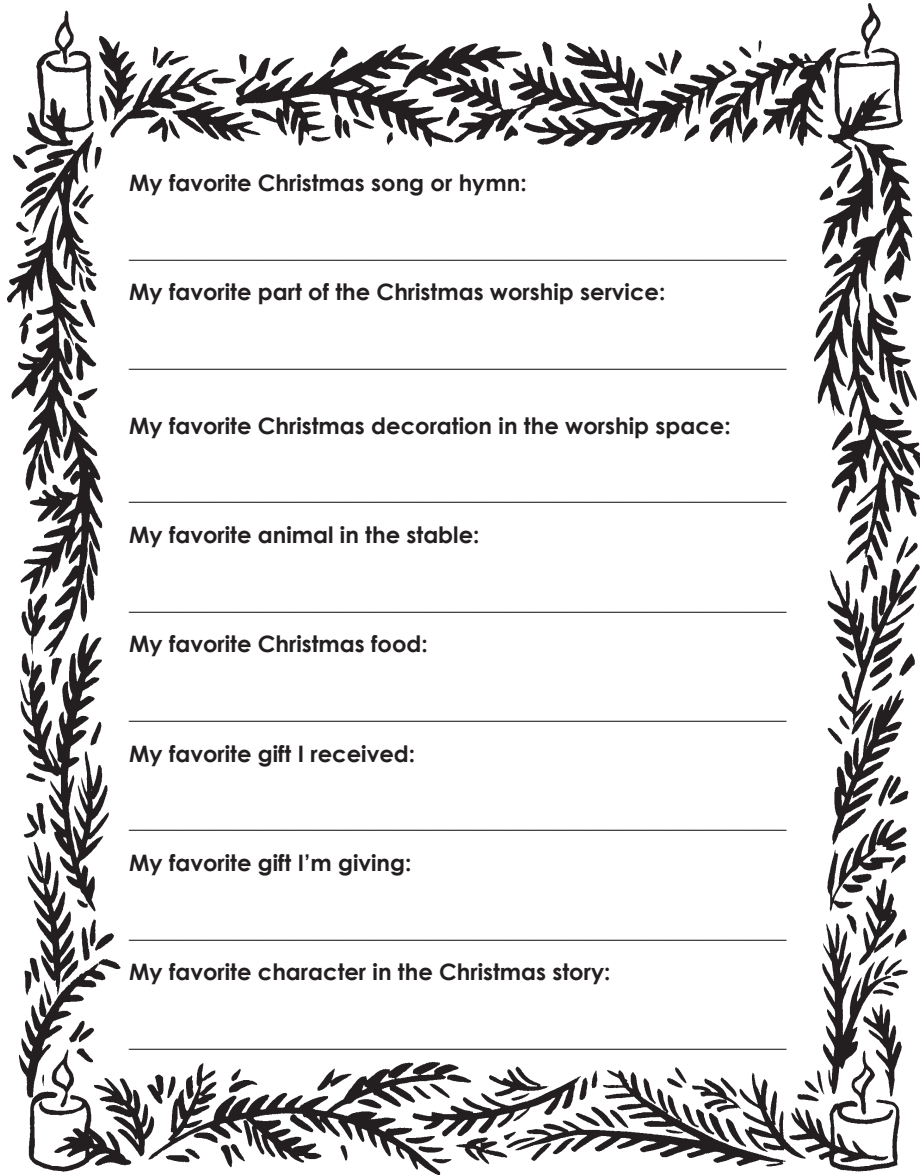


Favorites

Christmas is the favorite holiday of a lot of people. They enjoy their favorite songs, favorite foods, and favorite people. And Christmas is the time we celebrate the amazing gift of baby Jesus! Write about your Christmas favorites below.



My favorite Christmas song or hymn:

My favorite part of the Christmas worship service:

My favorite Christmas decoration in the worship space:

My favorite animal in the stable:

My favorite Christmas food:

My favorite gift I received:

My favorite gift I'm giving:

My favorite character in the Christmas story:



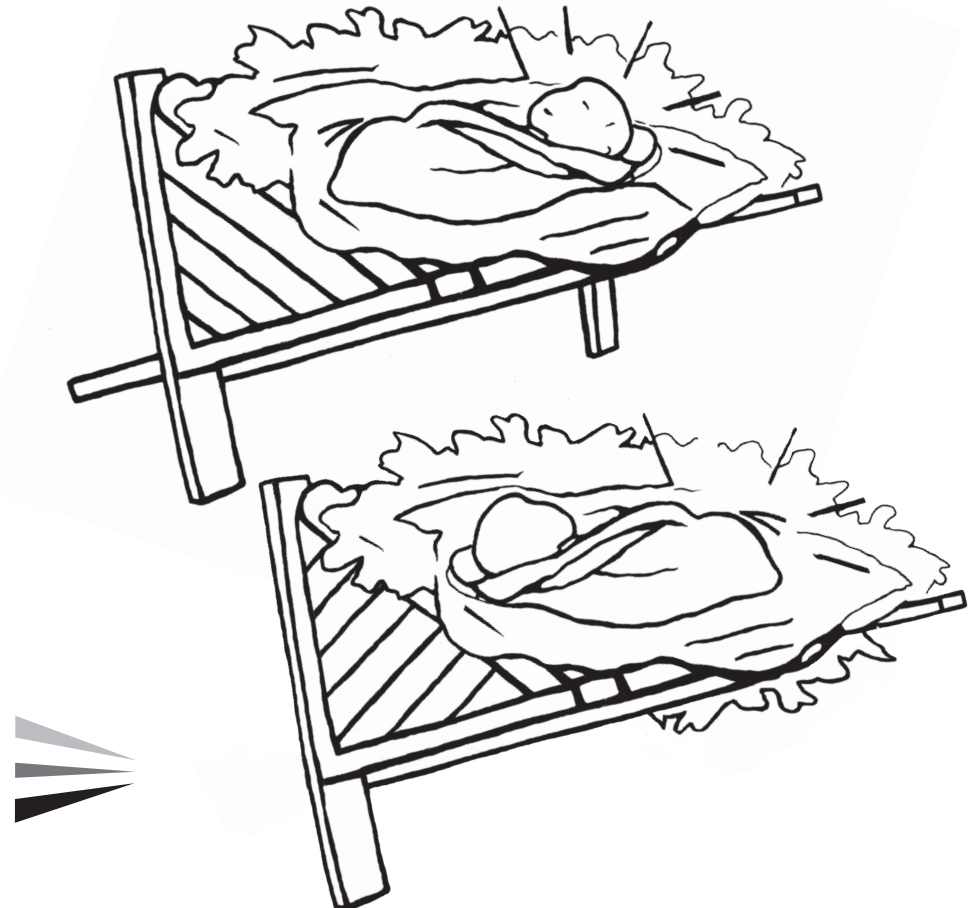
READER

Christmas Eve

- Today is **Christmas Eve**.
- The symbol for Christmas is a **baby in manger**.
- On Christmas Eve we celebrate the night when **Jesus** was **born** in a **manger**.

Seeing Double?

Below are two manger scenes with baby Jesus inside—but they're not the same! How many differences can you find between these two manger scenes?



Look It Up!

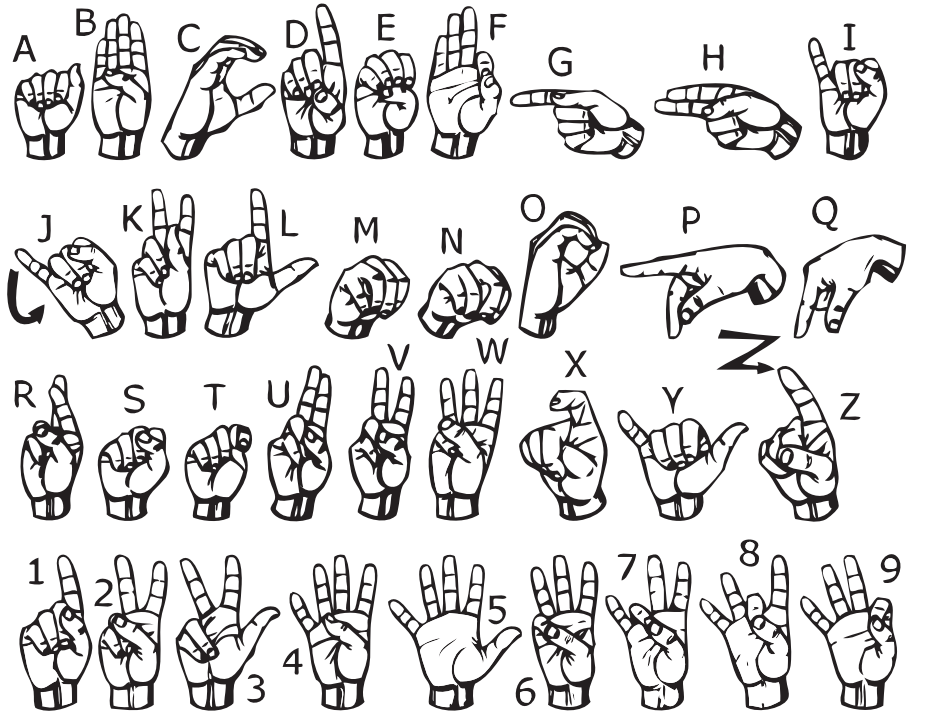
The memory verse is just a small piece of the Christmas story in Luke. Want a real challenge? Go to the second chapter of Luke and practice your sign language on the whole story from verses 1 through 20!

Use Your Hands

In order to learn today's memory verse, practice it on your hands! Below is the American Sign Language fingerspelling alphabet. Read the memory verse and then practice spelling each word using your hands.

"To you is born this day in the city of David a Savior, who is the Messiah, the Lord."

-Luke 2:11



Your Own Census

Caesar Augustus ordered a census. During a census, the government counts all the people who live in a certain place. During Bible times, everyone had to travel back to their hometowns. Families were counted together. Joseph and Mary traveled to Bethlehem, Joseph's hometown. Make your own census below.

My Census

Me _____

My parents _____

My siblings _____

My aunts _____

My uncles _____

My cousins _____

My grandparents _____